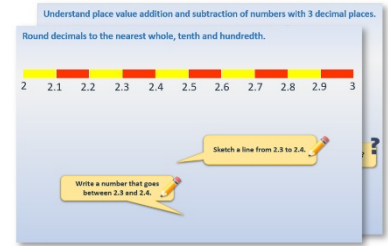


Year 1: Week 3, Day 4

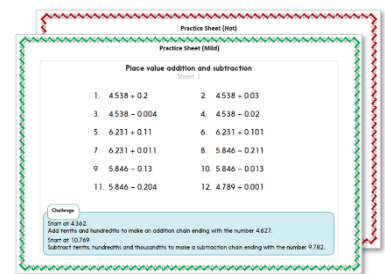
Add 10, 20 and 30

Each day covers one maths topic. It should take you about 1 hour or just a little more.

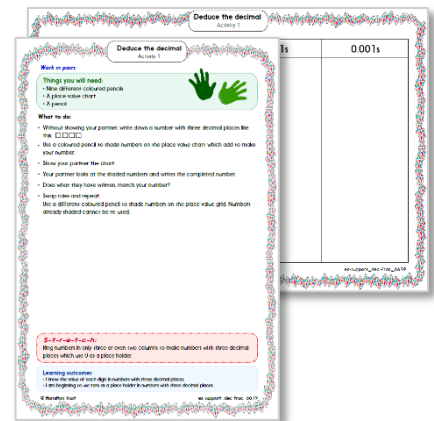
1. Start by reading through the **Learning Reminders**. They come from our *PowerPoint* slides.



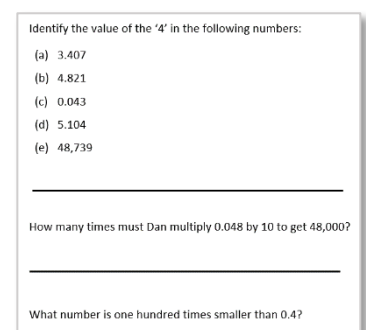
2. Tackle the questions on the **Practice Sheet**. There might be a choice of either **Mild** (easier) or **Hot** (harder)! Check the answers.



3. Finding it tricky? That's OK... have a go with a grown-up at **A Bit Stuck?**



4. Have I mastered the topic? A few questions to **Check your understanding**. Fold the page to hide the answers!



Learning Reminders

Add 10, then small multiples of 10 to 2-digit numbers.

1-100 grid

1	2	3	4	5	6	7	8	9	10
11	12	13	14	15	16	17	18	19	20
21	22	23	24	25	26	27	28	29	30
31	32	33	34	35	36	37	38	39	40
41	42	43	44	45	46	47	48	49	50
51	52	53	54	55	56	57	58	59	60
61	62	63	64	65	66	67	68	69	70
71	72	73	74	75	76	77	78	79	80
81	82	83	84	85	86	87	88	89	90
91	92	93	94	95	96	97	98	99	100

What is the total when we add 10 to this number?

Where would Spider land if we added another 10?

Spider started on 20 and did two jumps of 10.

$$20 + 10 + 10 = 40$$

$$20 + 20 = 40$$

Learning Reminders

Add 10, then small multiples of 10 to 2-digit numbers.

1-100 grid

1	2	3	4	5	6	7	8	9	10
11	12	13	14	15	16	17	18	19	20
21	22	23	24	25	26	27	28	29	30
31	32	33	34	35	36	37	38	39	40
41	42	43	44	45	46	47	48	49	50
51	52	53	54	55	56	57	58	59	60
61	62	63	64	65	66	67	68	69	70
71	72	73	74	75	76	77	78	79	80
81	82	83	84	85	86	87	88	89	90
91	92	93	94	95	96	97	98	99	100



How can Spider
calculate $42 + 20$?

?

$$42 + 20 = 62$$

The 10s digit
changes but the
1s digit doesn't.

Learning Reminders

Add 10, then small multiples of 10 to 2-digit numbers.

1-100 grid

1	2	3	4	5	6	7	8	9	10
11	12	13	14	15	16	17	18	19	20
21	22	23	24	25	26	27	28	29	30
31	32	33	34	35	36	37	38	39	40
41	42	43	44	45	46	47	48	49	50
51	52	53	54	55	56	57	58	59	60
61	62	63	64	65	66	67	68	69	70
71	72	73	74	75	76	77	78	79	80
81	82	83	84	85	86	87	88	89	90
91	92	93	94	95	96	97	98	99	100

Now try $38 + 20$.

$$38 + 20 = 58$$

Practice Sheet Mild

Adding 10s

Pick a number from the sheet. Add 20 to the number. Write the number sentence and use Spider to help find the answer. Aim for 10 different number sentences!

30

22

28

8

12

7

9

10

40

33

60

45

57

14

36

1-100 number grid

1	2	3	4	5	6	7	8	9	10
11	12	13	14	15	16	17	18	19	20
21	22	23	24	25	26	27	28	29	30
31	32	33	34	35	36	37	38	39	40
41	42	43	44	45	46	47	48	49	50
51	52	53	54	55	56	57	58	59	60
61	62	63	64	65	66	67	68	69	70
71	72	73	74	75	76	77	78	79	80
81	82	83	84	85	86	87	88	89	90
91	92	93	94	95	96	97	98	99	100

Practice Sheet Hot

Adding 10s

Pick a number from the sheet. Pick a tens card to add to the number. Write the number sentence and use Spider to help find the answer. Aim for 10 different number sentences!

30

22

28

8

12

7

9

10

40

33

60

45

57

14

36

Practice Sheet Hot

10s cards

Card Number Card Numbe Number Card Number Card Number Card 20 Number Card Number Card Number Card Number Card Number Card Number Card	Card Number Card Numbe Number Card Number Card Number Card 10 Number Card Number Card Number Card Number Card Number Card Number Card	Card Number Card Numbe Number Card Number Card Number Card 40 Number Card Number Card Number Card Number Card Number Card Number Card	Card Number Card Numbe Number Card Number Card Number Card 30 Number Card Number Card Number Card Number Card Number Card Number Card	Card Number Card Numbe Number Card Number Card Number Card 20 Number Card Number Card Number Card Number Card Number Card Number Card
Card Number Card Numbe Number Card Number Card Number Card 10 Number Card Number Card Number Card Number Card Number Card Number Card	Card Number Card Numbe Number Card Number Card Number Card 40 Number Card Number Card Number Card Number Card Number Card Number Card	Card Number Card Numbe Number Card Number Card Number Card 30 Number Card Number Card Number Card Number Card Number Card Number Card	Card Number Card Numbe Number Card Number Card Number Card 20 Number Card Number Card Number Card Number Card Number Card Number Card	Card Number Card Numbe Number Card Number Card Number Card 10 Number Card Number Card Number Card Number Card Number Card Number Card



1-100 number grid

1	2	3	4	5	6	7	8	9	10
11	12	13	14	15	16	17	18	19	20
21	22	23	24	25	26	27	28	29	30
31	32	33	34	35	36	37	38	39	40
41	42	43	44	45	46	47	48	49	50
51	52	53	54	55	56	57	58	59	60
61	62	63	64	65	66	67	68	69	70
71	72	73	74	75	76	77	78	79	80
81	82	83	84	85	86	87	88	89	90
91	92	93	94	95	96	97	98	99	100

Practice Sheets Answers

Adding 10s (mild)

$30 + 20 = 50$

$22 + 20 = 42$

$8 + 20 = 28$

$12 + 20 = 32$

$28 + 20 = 48$

$7 + 20 = 27$

$9 + 20 = 29$

$10 + 20 = 30$

$40 + 20 = 60$

$33 + 20 = 53$

$60 + 20 = 80$

$36 + 20 = 56$

$45 + 20 = 65$

$57 + 20 = 77$

$14 + 20 = 34$

Adding 10s (hot)

$30 + 10 = 40$

$22 + 10 = 32$

$8 + 10 = 18$

$12 + 10 = 22$

$28 + 10 = 38$

$7 + 10 = 17$

$9 + 10 = 19$

$10 + 10 = 20$

$40 + 10 = 50$

$33 + 10 = 43$

$60 + 10 = 70$

$36 + 10 = 46$

$45 + 10 = 55$

$57 + 10 = 67$

$14 + 10 = 24$

$30 + 20 = 50$

$22 + 20 = 42$

$8 + 20 = 28$

$12 + 20 = 32$

$28 + 20 = 48$

$7 + 20 = 27$

$9 + 20 = 29$

$10 + 20 = 30$

$40 + 20 = 60$

$33 + 20 = 53$

$60 + 20 = 80$

$36 + 20 = 56$

$45 + 20 = 65$

$57 + 20 = 77$

$14 + 20 = 34$

$30 + 30 = 60$

$22 + 30 = 52$

$8 + 30 = 38$

$12 + 30 = 42$

$28 + 30 = 58$

$7 + 30 = 37$

$9 + 30 = 39$

$10 + 30 = 40$

$40 + 30 = 70$

$33 + 30 = 63$

$60 + 30 = 90$

$36 + 30 = 66$

$45 + 30 = 75$

$57 + 30 = 87$

$14 + 30 = 44$

$30 + 40 = 70$

$22 + 40 = 62$

$8 + 40 = 48$

$12 + 40 = 52$

$28 + 40 = 68$

$7 + 40 = 47$

$9 + 40 = 49$

$10 + 40 = 50$

$40 + 40 = 80$

$33 + 40 = 73$

$60 + 40 = 100$

$36 + 40 = 76$

$45 + 40 = 85$

$57 + 40 = 97$

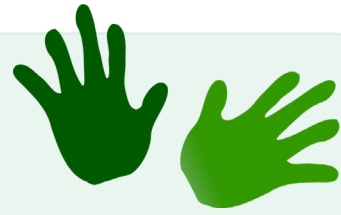
$14 + 40 = 54$

A Bit Stuck? Spider sums

Work in pairs

Things you will need:

- A 1-100 grid
- A spider
- Spider sums
- A pencil

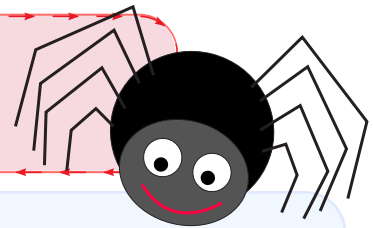


What to do:

- Choose a Spider sum.
- Place Spider on the first number in the sum.
- Use Spider to add 10.
Write the answer in the sum.
- Repeat for as many sums as you can.

S-t-r-e-t-c-h:

Choose a 2-digit number on the grid.
Use Spider to subtract 10.



Learning outcomes:

- I can use Spider to add 10 to 2-digit numbers.
- I am beginning to use Spider to subtract 10 from 2-digit numbers.

A Bit Stuck?
Spider sums

$24 + 10 = \square$

$64 + 10 = \square$

$17 + 10 = \square$

$52 + 10 = \square$

$39 + 10 = \square$

$40 + 10 = \square$

$75 + 10 = \square$

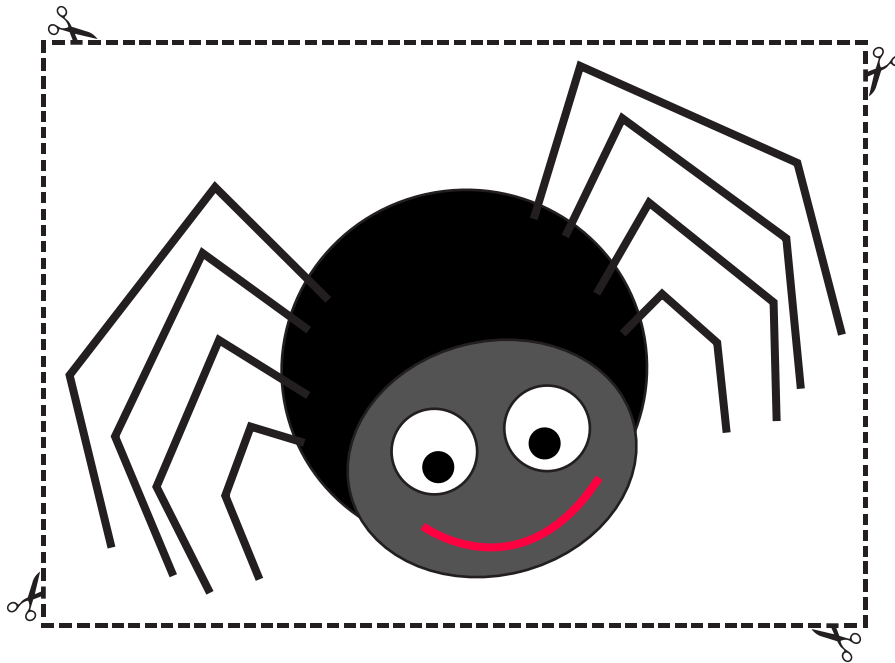
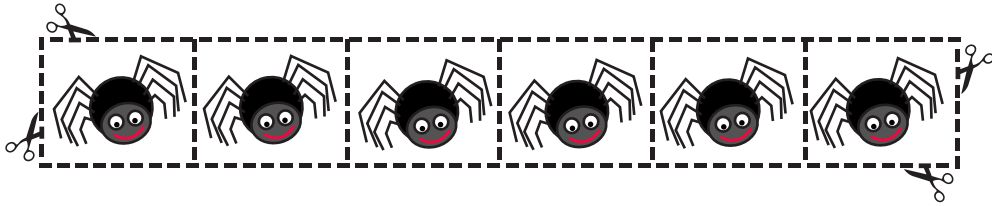
$81 + 10 = \square$



A Bit Stuck?
Spider sums

1	2	3	4	5	6	7	8	9	10
11	12	13	14	15	16	17	18	19	20
21	22	23	24	25	26	27	28	29	30
31	32	33	34	35	36	37	38	39	40
41	42	43	44	45	46	47	48	49	50
51	52	53	54	55	56	57	58	59	60
61	62	63	64	65	66	67	68	69	70
71	72	73	74	75	76	77	78	79	80
81	82	83	84	85	86	87	88	89	90
91	92	93	94	95	96	97	98	99	100

A Bit Stuck?
Spider sums



Check your understanding

Questions

True or false?

- $34 + 20 = 43$
- $62 + 20 = 82$
- Ten more than 55 is 66
- $85 = 50 + 30$
- $65 + 20 = 67$
- When you add a 10s number to a 2-digit number, both digits will change.

Write some 'true' additions to replace any above which are false.

Fold here to hide answers

Check your understanding

Answers

True or false?

- $34 + 20 = 43$ False, $34 + 20 = 54$.
- $62 + 20 = 82$ True.
- Ten more than 55 is 66 False, $55 + 10 = 65$.
- $85 = 50 + 30$ False, $85 = 50 + 35$ or $55 + 30$.
- $65 + 20 = 67$ False, $65 + 20 = 85$
- When you add a 10s number to a 2-digit number, both digits will change.
False, only the 10s digit changes, e.g. $47 + 20 = 67$ or $63 + 30 = 93$.

Write some 'true' additions and subtractions to replace those above which are false.

Children can check these using Spider counting on a 1-100 grid. Errors can arise when children count on in 1s, rather than 10s, or include the starting number in the count, so saying, for example, $64 + 30 = 84$.