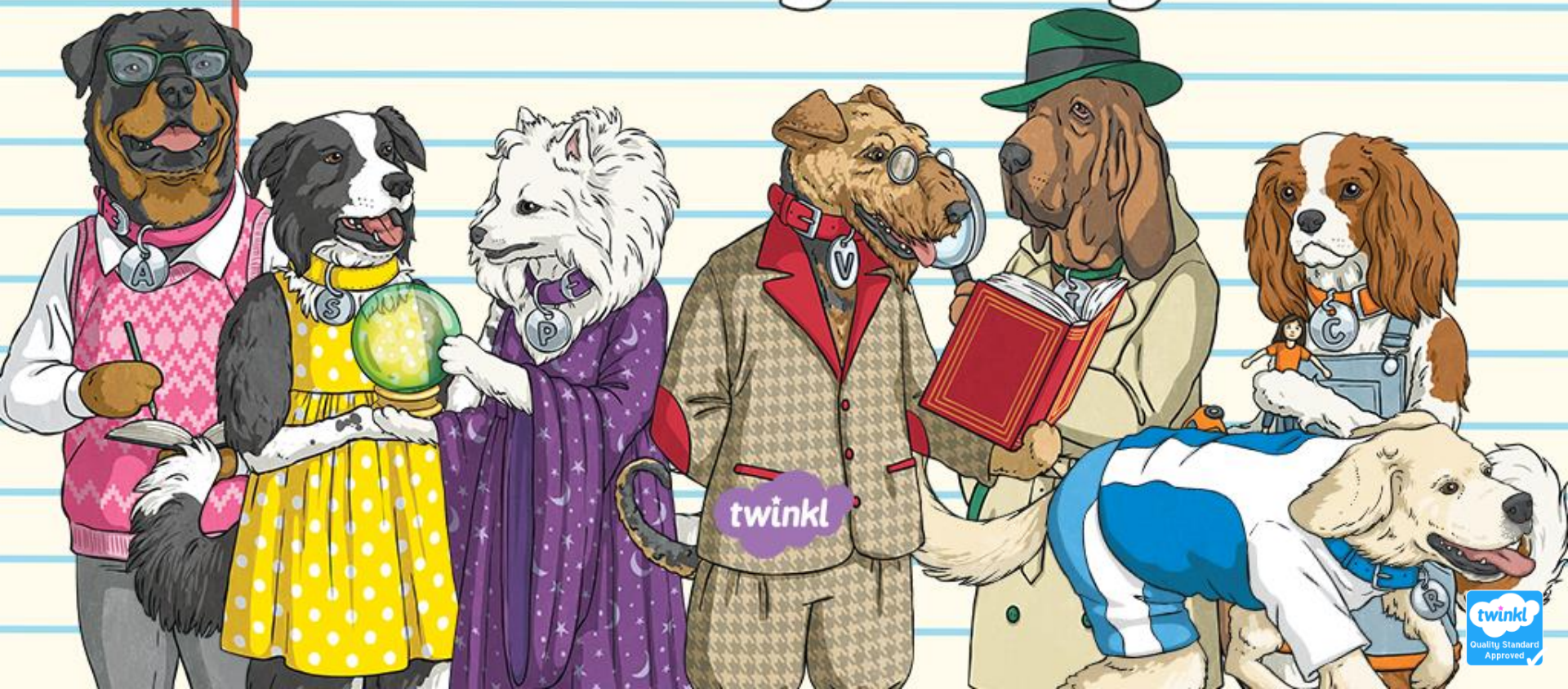




An Introduction to the Totally Pawsome Reading Gang





WALT: Read a range of stories including fairy stories, myths and legends and reflect on the similarities and difference. Predict what will happen next.

WILF: I can read a range of stories including fairy stories, myths and legends and reflect on the similarities and difference. I can predict what will happen next. I can answer comprehension questions using full sentences.

Who Are the Totally Pawsome Reading Gang?

The Totally Pawsome Reading Gang is a group of clever canines who each help with one of the reading content domains.

Click on each dog to find out who they are and what they do.



Vocabulary Victor



Inference Iggy



Summarising Sheba



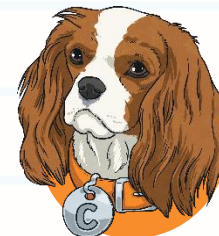
Predicting Pip



Rex Retriever



Arlo the Author



Cassie the Commentator



What Does **Vocabulary Victor** Do?



Vocabulary Victor helps with content domain **2a**:

Give/explain the meaning of words in context.

This means that he is there to help you to work out the **meaning** of words you don't know.

He helps you to do this by looking at the words or phrases you're unsure of in **context**.

This means using the story so far, the sentences around the words and what you already know about the plot to figure out what the words must mean.





What Might **Vocabulary Victor** Ask?



Vocabulary Victor might ask questions like these:

What does this word tell us about the character/setting/atmosphere?

Look at the sentence/passage and circle a word/phrase that means the same as...

Which word/phrase gives us the impression that the main character is...?

Why did the author use this word to describe...?

What might that mean?

What do you think the author is saying when they write...?





What Does **Rex Retriever** Do?



Rex Retriever helps with content domain **2b**:

Retrieve and record information/identify key details from fiction and non-fiction.

This means that he is there to help you to find **key pieces of information** within the text you are reading.

He helps you to do this by looking through the text for a specific answer.

With Rex Retriever questions, the answer you are looking for is always in the text somewhere... you just have to find and **retrieve** it!





What Might **Rex Retriever** Ask?

Rex Retriever might ask questions like these:

What is the name of the main character?

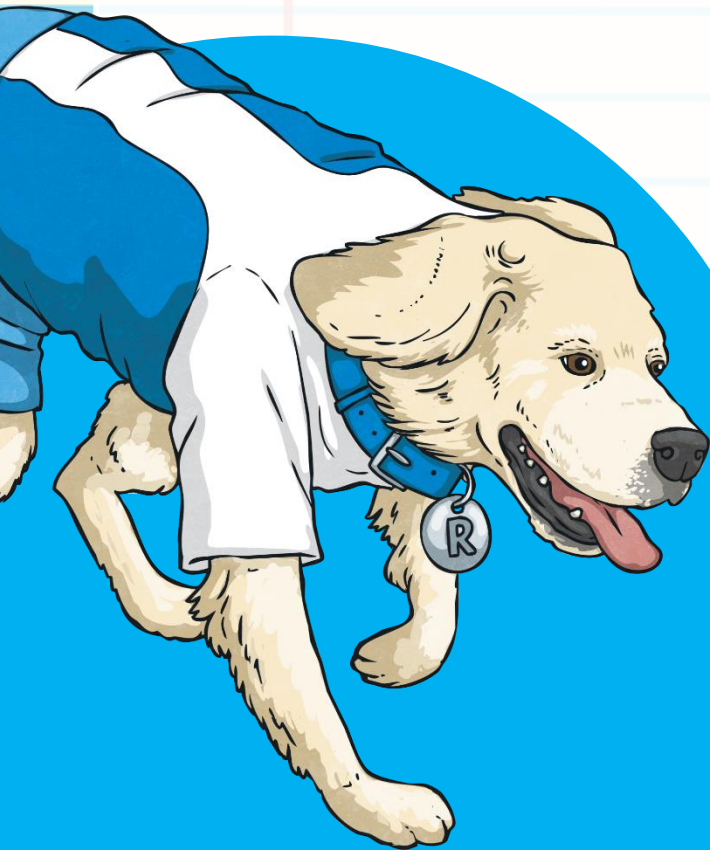
Which part of the text tells you...?

Where/when is this story set?
How do you know?

How does the main character
behave/speak/look?

What do you think is happening
in this part of the story?

Who is telling this story? How do you know?





What Does Predicting Pip Do?



Predicting Pip helps with content domain **2e**:

Predict what might happen from details stated and implied.

This means that she is there to help you to try to make a **logical and reasonable guess about what could happen next.**

She helps you to do this by getting you to look at what has already happened, what the characters may have hinted is coming up or what has been implied by the author's use of language.

If someone brought a cake lit with candles into a party, what would **logically** happen next?





What Might Predicting Pip Ask?



Predicting Pip might ask questions like these:

How do you think this story might end?

Based on what you've read, what do you think might happen next?

What clues does the front cover give us about the contents of this book?

How would someone you know react if they were in this situation?

Do you think that this character will change their behaviour in future? Why?

What do you think is likely to happen when...?





What Does **Inference Iggy** Do?



Inference Iggy helps with content domain 2d:

Make inferences from the text/explain and justify inferences with evidence from the text.

This means that he is there to help you to **pick up ideas from the text** that are **not always written** in the text itself.

He helps you to do this by getting you to read the text as if you are a detective. **You're not looking for what is there – you're looking for what is meant by it.**

For example, if the text says 'Jenni's face was red – she wrinkled her brow and began to shout', what could you **infer** about how Jenni feels?





What Might **Inference Iggy** Ask?



Inference Iggy might ask questions like these:

Why did the character behave like this?

What makes you think...?
Give evidence to support your answer.

What impression are we given about...? Why?

How does this character feel about the situation? How do you know?

Which character would you most like to meet?
Explain why.

Why is... important? Explain your answer.





What Does **Summarising Sheba** Do?



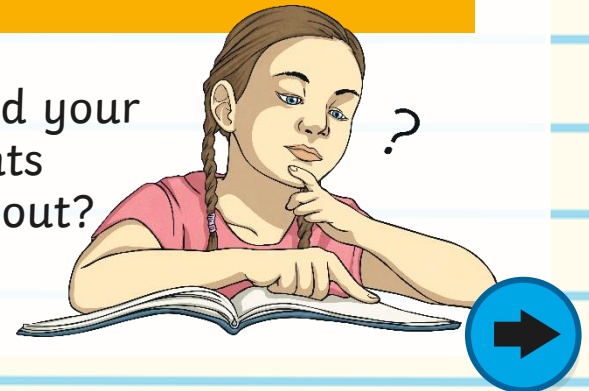
Summarising Sheba helps with content domain 2c:

Summarise main ideas from more than one paragraph.

This means that she is there to help you to **sum up** what you've read.

She helps you to do this by reading the text, **picking out the key points** that are really important and giving a quick run down of the text's main ideas.

Imagine that you've read a book and have to send your friend a message about the plot – which key points would you tell them and which would you leave out?





What Might Summarising Sheba Ask?



Summarising Sheba might ask questions like these:

How would you sum up...?

Can you describe what happened in this chapter?

What is the main theme/argument/message of this paragraph?

Write a new blurb for this story using 20 words or fewer.

Can you describe what happened in three short sentences?

What is the most important message in this book?





What Does **Arlo the Author** Do?



Arlo the Author helps with content domain **2g**:

Identify/explain how meaning is enhanced through choice of words and phrases.

This means that he is there to help you to spot examples of **ambitious vocabulary** and **figurative language** within the text.

When you find them, Arlo helps you to think about **why** the author made those vocabulary choices and how they give a **certain meaning** to the text.

For example, an author could say that the water in a lake was still and reflective. However, for effect, they could describe the water as 'like a sheet of glass'.





What Might **Arlo the Author** Ask?



Arlo the Author might ask questions like these:

What does this word tell us about the character/setting/atmosphere?

How has the author's choice of words created a feeling of...?

Look at that phrase which implies that the character/setting/atmosphere is...

Look for a simile/metaphor in the text.
How does this add meaning?

Find and copy an example of personification from the text.
Why is it used?

Why did the author choose this particular verb/adjective/adverb?





What Does **Cassie the Commentator** Do?



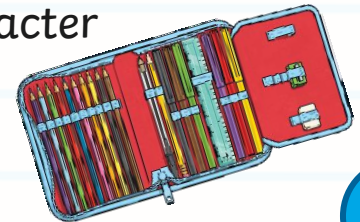
Cassie the Commentator helps with content domains **2f** and **2h**:

2f: Identify/explain how information/narrative content is related and contributes to meaning as a whole.

2h: Make comparisons within the text.

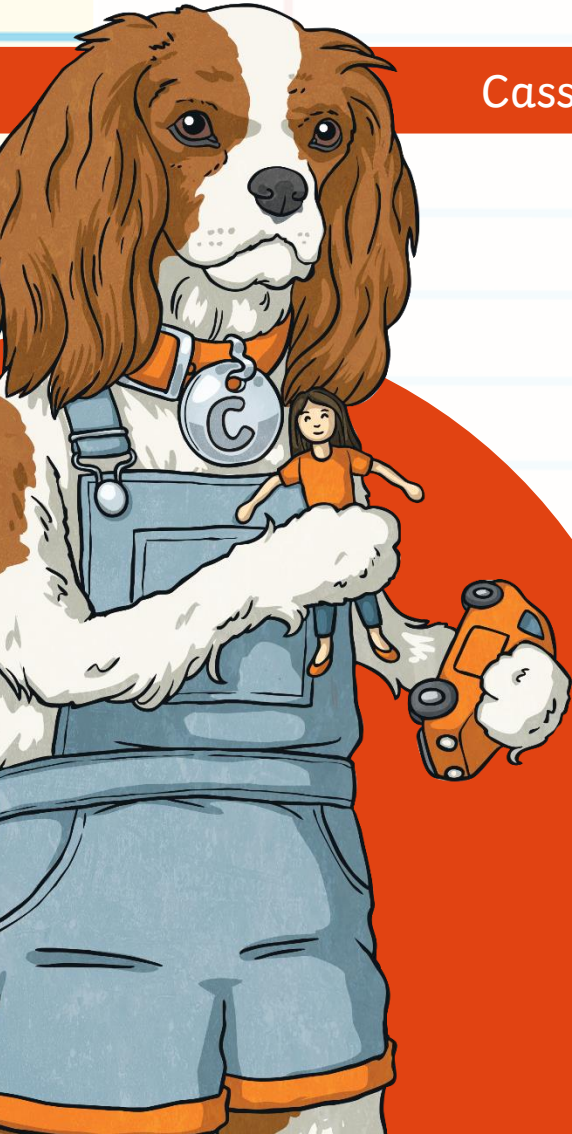
This means that she is there to help you to do two things:

- explain how certain parts of a text build or change an overall message or meaning;
- say how characters or events within the story are similar to or different from each other or how a single character changes over the course of a story.





What Might **Cassie the Commentator** Ask?



Cassie the Commentator might ask questions like these:

Compare one character to another.
How are they different or similar?

How are the settings within the story
similar or different?

Who has the author written this text for? Why?

How has this character changed during the text?

Compare how the characters react to this situation.
Who deals with it best?

What is the most thought-provoking moment of the story?



Who Are the Totally Pawsome Reading Gang?

The Totally Pawsome Reading Gang is a group of clever canines who each help with one of the reading content domains.

Click on each dog to find out who they are and what they do.



Vocabulary Victor



Inference Iggy



Summarising Sheba



Predicting Pip



Rex Retriever



Arlo the Author



Cassie the Commentator



Plenary

Who Are the Totally Pawsome Reading Gang?

How can they help you with your reading?

