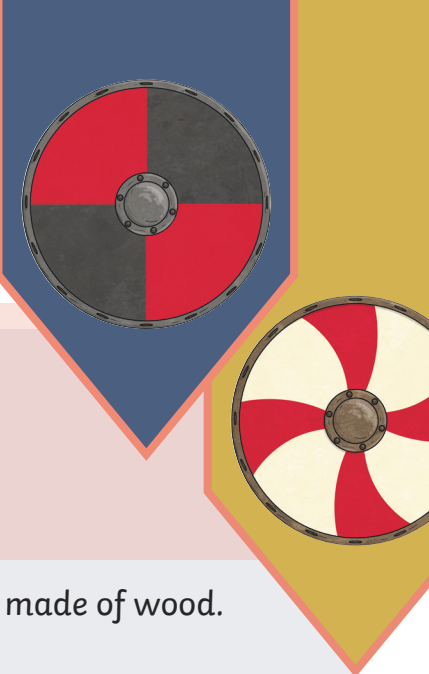


Anglo-Saxon Shields

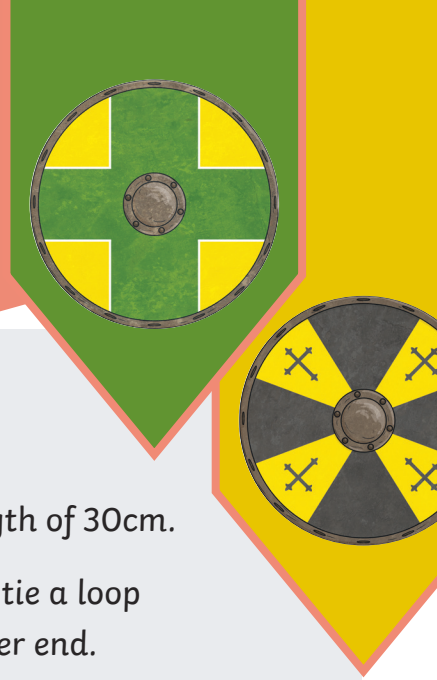
Anglo-Saxons carried shields into battle. They were seen as a very important piece of war equipment as they were the only thing that the Anglo-Saxons had to defend themselves.



- Anglo-Saxon shields were made of wood.
- They were circular in shape.
- They used two layers of wooden planks to stop the shield from splitting when hit.
- Cloth was stuck between the two layers of wood, using fish or cheese glue.
- In the centre of the shield, there was an iron piece called a boss.
- The boss protected the centre of the shield, which was the weakest point, and it also deflected the blows from the enemy. It also protected the warriors hand while holding the shield.
- On the reverse of the boss, there was a handle.
- To stop the enemy from seeing the joins in the planks, and hacking through the gaps, the Anglo-Saxons put a stiff rim of rawhide around the edge of their shields.
- It was common for Anglo-Saxon shields to be covered with leather.
- It is thought that the Anglo-Saxons would decorate their shields using colours including white, black, red, yellow, green and blue.



Make Your Own Anglo-Saxon Shield

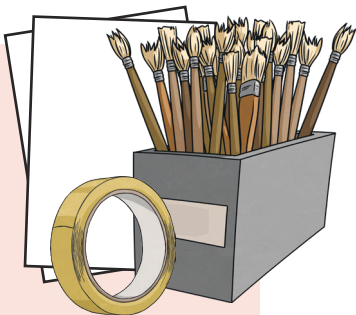


You will need:

- string
- pencil
- drawing pin
- large piece of thick cardboard
- card
- scissors
- white, black, red, yellow, green and blue paint
- palette
- paintbrushes
- water pots
- sticky tape

Method:

1. Begin by cutting a piece of string to a length of 30cm.
2. Tie the pencil to one end of the string and tie a loop (for the drawing pin to go into) in the other end.
3. Use the drawing pin to attach the looped end of the string to the centre of the cardboard.
4. Keeping the string pulled taut (tight), use the pencil to draw a circle. The circle must be big enough to serve as shield.
5. Remove the drawing pin and draw a smaller circle in the middle of the shield. This will be the boss of your Anglo-Saxon shield and should be about 10cm in diameter (across).
6. Carefully, use scissors to cut out the shield.
7. Using a pencil, draw your design onto the shield. You might like to take inspiration from one of the illustrations or create one of your own.
8. Choose the colours that you would like to use and start painting your design. Make sure you don't paint the boss yet.
9. To finish painting, paint the boss in the centre of your shield using black paint.
10. To make the handle, cut a piece of cardboard that is wide enough for your hand to hold and long enough for it to reach across the centre of your shield (this should be roughly 30cm).
11. When the paint has fully dried, turn your shield over to add the handle. Place the cardboard strip into a bridge shape in the centre of the shield and then stick each end down with sticky tape.



Disclaimer

We hope you find the information on our website and resources useful. The activities set out in this resource are potentially hazardous. The activities are not suitable for all children and adult supervision may be required for some of the activities. It is your responsibility to assess whether the children in your care are able to safely carry out the activities and whether the children require adult supervision. You are responsible for carrying out proper risk assessments on the activities and for ensuring that activities can be carried out safely. We are not responsible for the health and safety of your group or environment so, insofar as it is possible under the law, we cannot accept liability for any loss suffered by anyone undertaking the activity or activities referred to or described in this resource. It is also your responsibility to ensure that those participating in the activity are fit enough to do so and that you or the organisation you are organising for has the relevant insurance to carry out the physical activity. If you are unsure in any way, we recommend that you take guidance from a suitably qualified professional.